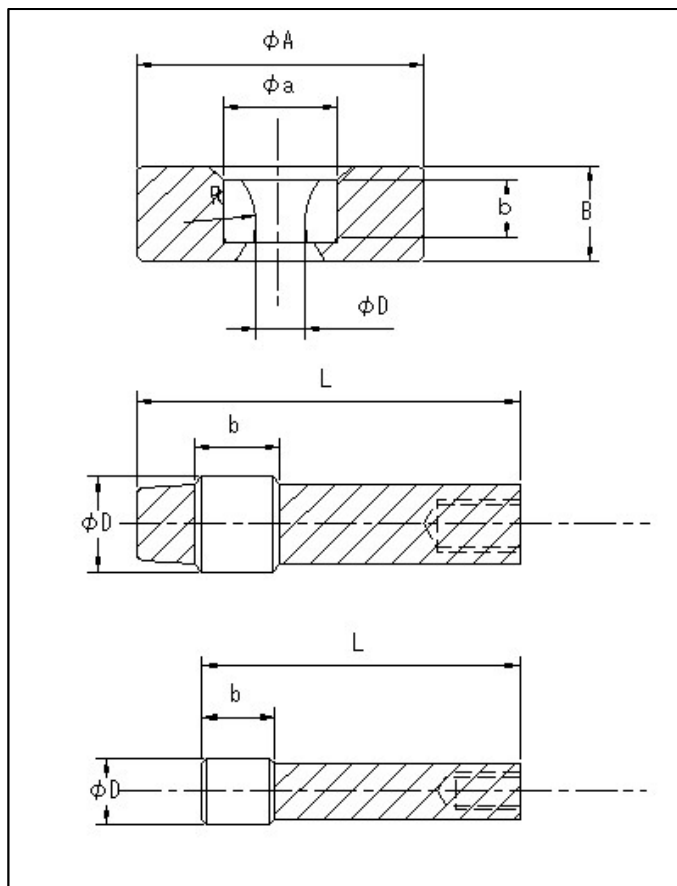


KD·B-KP芯头拉伸



	D	a	b	R	A	B
KD18	6 <	18	11	15	35	16
KD20	6 - 8	20	11	15	55	16
KD25	8 - 12	25	11	15	55	16
KD30	12 - 15	30	14	15	55	23
KD35	15 - 18	35	14	15	85	23
KD40	18 - 21	40	14	15	85	23
KD50	21 - 28	50	20	20	120	30
KD60	28 - 36	60	23	20	135	42
KD70	36 - 43	70	25	25	135	42
KD80	43 - 51	80	30	30	160	50
KD90	51 - 58	90	30	30	160	50
KD100	58 - 65	100	30	30	190	50
KD110	65 - 72	110	30	30	190	50
KD120	72 - 80	120	45	50	200	75
KD130	80 - 90	130	45	50	200	75
KD140	90 - 100	140	45	50	220	80
KD150	100 - 110	150	45	50	220	80

	D	L	b
B7	5-7	80	6
B9	7-9	60	9
B11	9-11	60	9
B13	11-13	65	9
B15	13-15	66	10
B17	15-17	68	12
B19	17-19	80	14
B22	19-22	80	14
B25	22-25	82	17
B28	25-28	85	17
B31	28-31	86	19

	D	L	b
KP28	24-28	70	18
KP31	28-31	80	20
KP35	31-35	84	20
KP40	35-40	88	20
KP45	40-45	96	25
KP50	45-50	102	28
KP55	50-55	112	31
KP60	55-60	117	34
KP65	60-65	123	37
KP70	65-70	132	40
KP75	70-75	137	43
KP80	75-80	143	46
KP85	80-85	159	49
KP90	85-90	159	52