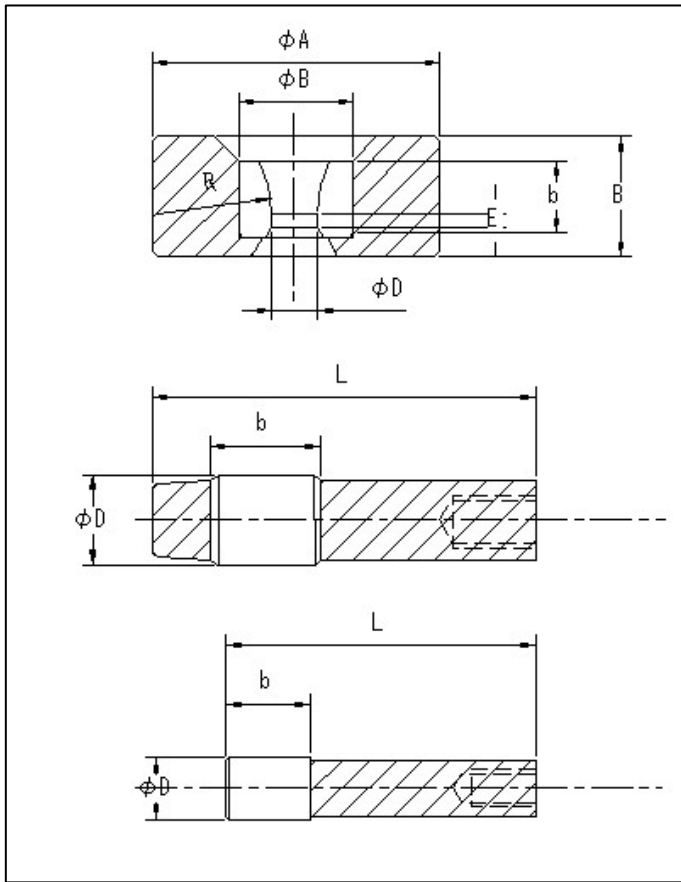


MD·MB—MP芯头拉伸

MD·MB—MP芯头拉伸



	D	a	b	E	R	A	B
MD25	12 <	25	15	3	20	48	25
MD30	12 - 15	30	15	3	20	70	25
MD35	15 - 20	35	18	4	25	85	35
MD40	20 - 25	40	20	4	30	100	35
MD50	25 - 30	50	25	5	40	123	40
MD60	30 - 38	60	28	6	40	123	45
MD70	38 - 45	70	28	6	40	145	45
MD80	45 - 52	80	30	6	40	145	50
MD90	52 - 60	90	30	6	40	175	50
MD100	60 - 68	100	40	7	60	195	65
MD110	68 - 75	110	40	7	60	195	65
MD120	75 - 85	120	40	7	60	195	70
MD130	85 - 95	130	40	8	50	215	70
MD140	95 - 105	140	40	8	50	215	75
MD150	105 - 115	150	40	8	50	235	75

	D	L	b
MB9	7-9	62	12
MB11	9-11	63	13
MB13	11-13	70	13
MB15	13-15	71	15
MB17	15-17	73	17
MB19	17-19	85	20
MB22	19-22	86	21
MB25	22-25	88	23
MB28	25-28	90	23
MB31	28-31	90	23

	D	L	b
MP28	24-28	80	23
MP31	28-31	80	25
MP35	31-35	98	30
MP40	35-40	100	30
MP45	40-45	100	30
MP50	45-50	103	30
MP55	50-55	103	30
MP60	55-60	105	30
MP65	60-65	115	35
MP70	65-70	115	35
MP75	70-75	115	35
MP80	75-80	120	35
MP85	80-85	120	40
MP90	85-90	120	40
MP100	90-100	120	40